

REMS REG Universal

Universal deburrer

Universal quality tool for deburring tubes and edges of different materials.

Copper, steel, brass, aluminium, plastic.

REMS REG Universal – the all-purpose deburrer.

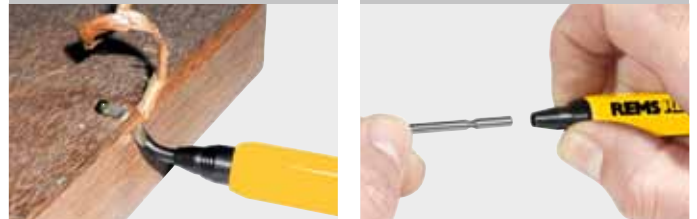
Robust metal design for tough use.

Easy handling and good grip thanks to ergonomically designed hexagon handle.

Rotating universal deburrer blade in handle accommodates to the work piece edge to be deburred.

Specially hardened and specially ground universal deburrer blade guarantees easy deburring and long service life.

Fast, simple blade replacement by pulling back the front sliding sleeve.



Supply format

REMS REG Universal. Universal deburrer. For copper, steel, brass, aluminium, plastic. On cardboard.

	Art.-No.	
	113910	

Accessories

Description	Art.-No.	
Universal deburring blade, ground	113360	

REMS REG St 1/4–2"

Inner pipe deburrer

Robust quality tool for inner pipe deburring.

For electric operation.

Steel pipes and other pipes Ø 1/4–2"

REMS REG St 1/4–2": effortless electric deburring.

Inner pipe deburrer with octagonal attachment head for operating by means of electric die stocks with octagonal seat, e.g. REMS Amigo E, REMS Amigo, REMS Amigo 2, REMS Amigo 2 Compact.

Specially hardened and designed deburring blade ensures easy deburring and extremely long life. Double edges for optimum chip flow, specially for small sizes.



German Quality Product



Supply format

REMS REG St 1/4–2". Inner pipe deburrer for electric operation. For steel pipes and other pipes, Ø 1/4–2". In cardboard box.

	Art.-No.	
	731700	

REMS REG 3–35

Outer-inner tube deburrer

Sturdy manual tool for outer-inner tube deburring.

Copper, brass, aluminium, steel, plastic tubes

Ø 3–35 mm
Ø 1/8–1 3/8"

REMS REG 3–35 – the sharp edge.

Fast, effortless deburring through 3 specially hardened and ground deburring blades.

Robust housing in shock-proof, resistant plastic.



German Quality Product

Supply format

REMS REG 3–35. Outer-inner tube deburrer. For copper, brass, aluminium, steel, plastic tubes, Ø 3–35 mm, Ø 1/8–1 3/8".

	Art.-No.	
	113900	